



Certificate of Analysis

Compliance Test

Client Information:

HARBOR CITY HEMP, LLC
3280 Suntree Blvd
Suite 105
MELBOURNE, FL 32940

Batch # SG-BS050-S1
Batch Date: 2023-07-31
Extracted From: Hemp

Test Reg State: Florida

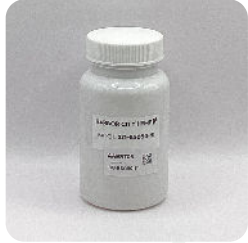
Production Facility: Harbor City Hemp
Production Date: 2023-07-31

Order # HAR230731-050001
Order Date: 2023-07-31
Sample # AAES706

Sampling Date: 2023-08-01
Lab Batch Date: 2023-08-01
Completion Date: 2023-08-04

Initial Gross Weight: 40.263 g

Number of Units: 1
Net Weight per Unit: 414.100 mg



Product Image



**Potency
Tested**

Potency 10
Specimen Weight: 104.190 mg

Tested
SOP13.001 (LCUV)


Pieces For Panel: 30

| Analyte | Dilution (1:n) | LOD (%) | LOQ (%) | Result (mg/g) | (%) |
|------------------|----------------|---------|---------|---------------|--------|
| CBD | 100.000 | 5.40E-5 | 0.015 | 120.000 | 12.000 |
| CBN | 10.000 | 1.40E-5 | 0.015 | 2.060 | 0.206 |
| CBDV | 10.000 | 6.50E-5 | 0.015 | 0.800 | 0.080 |
| CBC | 10.000 | 1.80E-5 | 0.015 | 0.570 | 0.057 |
| CBG | 10.000 | 2.48E-4 | 0.015 | 0.170 | 0.017 |
| CBDA | 10.000 | 1.00E-5 | 0.015 | <LOQ | <LOQ |
| CBGA | 10.000 | 8.00E-5 | 0.015 | <LOQ | <LOQ |
| Delta-9 THC | 10.000 | 1.30E-5 | 0.015 | <LOQ | <LOQ |
| THCA-A | 10.000 | 3.20E-5 | 0.015 | <LOQ | <LOQ |
| THCV | 10.000 | 7.00E-6 | 0.015 | <LOQ | <LOQ |
| Total Active CBD | 10.000 | | | 120.000 | 12.000 |
| Total Active THC | 10.000 | | | <LOQ | <LOQ |



Potency Summary

| | | | |
|-------------------------------------|--|--|--|
| Total Active THC None Detected | | Total Active CBD 12.000% 49.690mg | |
| Total CBG 0.017% 0.070mg | | Total CBN 0.206% 0.850mg | |
| Other Cannabinoids 0.137% 0.57mg | | Total Cannabinoids 12.360% 51.180mg | |


Aixa Sun Lab Director/Principal Scientist
D.H.Sc., M.Sc., B.Sc., MT (AAB)



Definitions and Abbreviations used in this report: Total Active CBD = CBD + (CBD-A * 0.877), *Total CBDV = CBDV + (CBDVA * 0.87), Total Active THC = THCA-A * 0.877 + Delta 9 THC, Total THCV = THCV + (THCVA * 0.87), CBG Total = (CBGA * 0.877) + CBG, CBN Total = (CBNA * 0.877) + CBN, Total CBC = CBC + (CBCA * 0.877), Total THC-O-Acetate = Delta 8 THC-O-Acetate + Delta 9 THC-O-Acetate, Total THCP = Delta8-THCP + Delta9-THCP, Other Cannabinoids Total = Total Cannabinoids - All the listed cannabinoids on the summary section, Total Detected Cannabinoids = Delta6a10a-THC + Delta8-THC + Total CBN + CBT + CBE + Delta8-THCV + Total CBG + Total CBD + Total THCV + CBL + Total THC + Total CBC + Total CBDV + Delta10-THC + Total THC-O-Acetate + Total THCP. (mg/ml) = Milligrams per Milliliter, LOQ = Limit of Quantitation, LOD = Limit of Detection, Dilution = Dilution Factor (ppb) = Parts per Billion, (%) = Percent, (cfu/g) = Colony Forming Unit per Gram (cfu/g) = Colony Forming Unit per Gram, , LOD = Limit of Detection, (µg/g) = Microgram per Gram (ppm) = Parts per Million, (ppm) = (µg/g), (aw) = Water Activity, (mg/Kg) = Milligram per Kilogram, ACS uses simple acceptance criteria. Passed - Analyte/microbe is not detected or is at the level below the action limit per FL rule 64ER20-39, 5K-4.036, 5K-4.034. Failed - Analyte/microbe is at the level that equal or above the action limit per FL rule 64ER20-39, 5K-4.036, 5K-4.034 Sample not received via laboratory sampling.

This report shall not be reproduced, without written approval, from ACS Laboratory. The results of this report relate only to the material or product analyzed. Test results are confidential unless explicitly waived otherwise. ACS Laboratory is accredited to the ISO/IEC 17025:2017 Standard.