



DEA No. RA0571996  
FL License # CMTL-0003  
CLIA No. 10D1094068

## Certificate of Analysis

Compliance Test

**HARBOR CITY HEMP, LLC**  
3280 Suntree Blvd  
Suite 105  
MELBOURNE, FL 32940

Batch # CT-1122  
Batch Date: 2022-11-09  
Extracted From: Hemp

Test Reg State: Florida

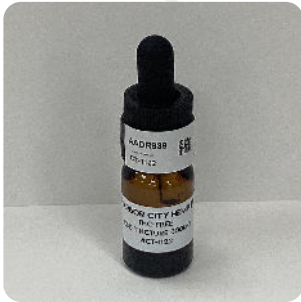
Production Facility: Harbor City Hemp  
Production Date: 2022-11-09

Order # HAR221109-010001  
Order Date: 2022-11-09  
Sample # AADR939

Sampling Date: 2022-11-12  
Lab Batch Date: 2022-11-12  
Completion Date: 2022-11-14

Initial Gross Weight: 43.270 g  
Net Weight: 9.370 g  
Density: .969 g/ml  
Volume: 10 ml

Number of Units: 1  
Net Weight per Unit: 9370.000 mg



Product Image



Potency  
Tested



### Potency 10

Specimen Weight: 113.960 mg

Tested  
SOP13.001 (LCUV)

Analyte	Dilution (1:n)	LOD (%)	LOQ (%)	Result (mg/ml)	(%)
CBD	10.000	5.40E-5	0.0015	57.1610	5.8990
CBDV	10.000	6.50E-5	0.0015	0.3150	0.0325
CBC	10.000	1.80E-5	0.0015	<LOQ	<LOQ
CBDA	10.000	1.00E-5	0.0015	<LOQ	<LOQ
CBG	10.000	2.48E-4	0.0015	<LOQ	<LOQ
CBGA	10.000	8.00E-5	0.0015	<LOQ	<LOQ
CBN	10.000	1.40E-5	0.0015	<LOQ	<LOQ
Delta-9 THC	10.000	1.30E-5	0.0015	<LOQ	<LOQ
THCA-A	10.000	3.20E-5	0.0015	<LOQ	<LOQ
THCV	10.000	7.00E-6	0.0015	<LOQ	<LOQ



### Potency Summary

Total Active THC None Detected	Total Active CBD 5.899% 535.600mg
Total CBG None Detected	Total CBN None Detected
Other Cannabinoids 0.032% 3.000mg	Total Cannabinoids 5.932% 555.830mg

Xueli Gao  
Ph.D., DABT  
Lab Toxicologist

Aixia Sun  
D.H.Sc., M.Sc., B.Sc., MT (AAB)  
Lab Director/Principal Scientist



Definitions and Abbreviations used in this report: Total Active CBD = CBD + (CBD-A \* 0.877), \*Total CBDV = CBDV + (CBDVA \* 0.87), Total Active THC = THCA-A \* 0.877 + Delta 9 THC, Total THCV = THCV + (THCVA \* 0.87), CBG Total = (CBGA \* 0.877) + CBG, CBN Total = (CBNA \* 0.877) + CBN, Total CBC = CBC + (CBCA \* 0.877), Total THC-O-Acetate = Delta 8 THC-O-Acetate + Delta 9 THC-O-Acetate, Other Cannabinoids Total = Total Cannabinoids - All the listed cannabinoids on the summary section, Total Detected Cannabinoids = Delta6a10a-THC + Delta8-THC + Total CBN + CBT + Delta8-THCV + Total CBG + Total CBD + Total THCV + CBL + Total THC + Total CBC + Total CBDV + Delta10-THC + Total THC-O-Acetate, Analyte Details above show the Dry Weight Concentrations unless specified as 12% moisture concentration. (mg/ml) = Milligrams per Milliliter, LOQ = Limit of Quantitation, LOD = Limit of Detection, Dilution = Dilution Factor (ppb) = Parts per Billion, (%) = Percent, (cfu/g) = Colony Forming Unit per Gram (cfu/g) = Colony Forming Unit per Gram, , LOD = Limit of Detection, (µg/g) = Microgram per Gram (ppm) = Parts per Million, (ppm) = (µg/g), (aw) = aw (area ratio) = Area Ratio, (mg/Kg) = Milligram per Kilogram, \*Measurement of Uncertainty = +/- 10%

This report shall not be reproduced, without written approval, from ACS Laboratory. The results of this report relate only to the material or product analyzed. Test results are confidential unless explicitly waived otherwise. Accredited by a third-party accrediting body as a competent testing laboratory pursuant to ISO/IEC 17025 of the International Organization for Standardization.